



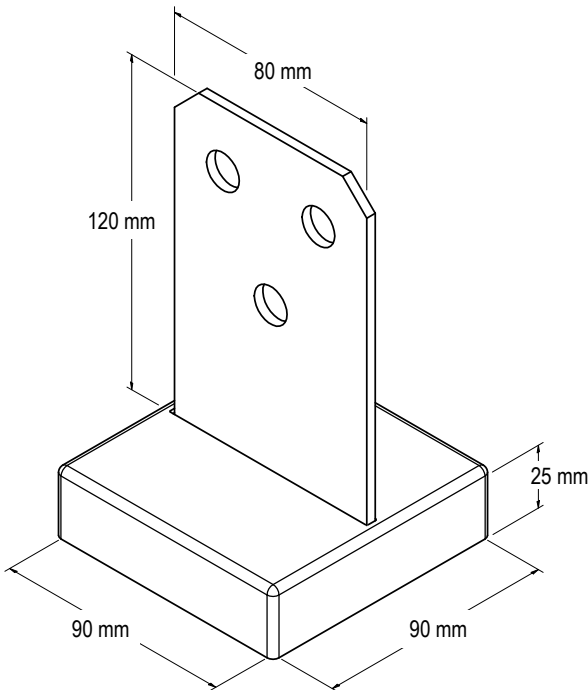
GALVANISED CONCEALED BOLT DOWN POST SUPPORTS

JUN23

Compliant with the requirements of AS1720.

G GALVANISED

BOLTED TO CONCRETE



APPLICATION

An alternative to the traditional U-shaped bolt down post supports. This T Blade provides excellent support strength and an architectural and concealed finish.

SPECIFICATION

VUETRADE Concealed Bolt Down Post Supports are manufactured out of G300 Z275 steel in 3mm thickness. The concealing caps are manufactured in Stainless Steel 304.

- 145mm Blade Height (including base plate)
- 80mm Blade Width
- Hot Dipped Galvanised Blade
- SS304 concealing caps

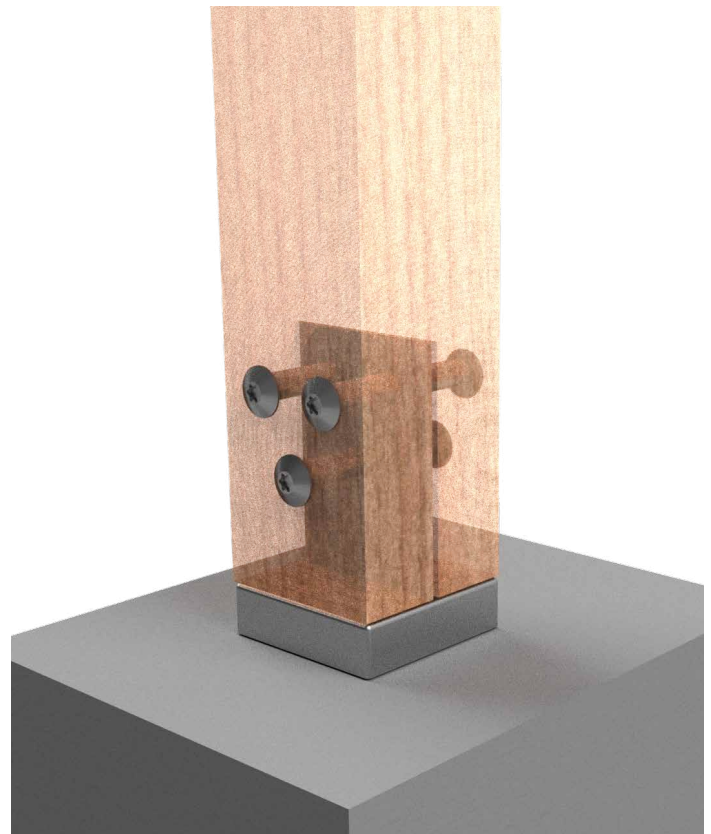
FASTENERS

Blade: 3x Zinc-Nickel Coated VUEBOLT or appropriate M12 bolts with hex nuts

Base: 2x M12 concrete bolts or equivalent

SIZES

Product Code	Size (mm)	Bolt Size	Box Qty
VCBPS90	90	M12	10

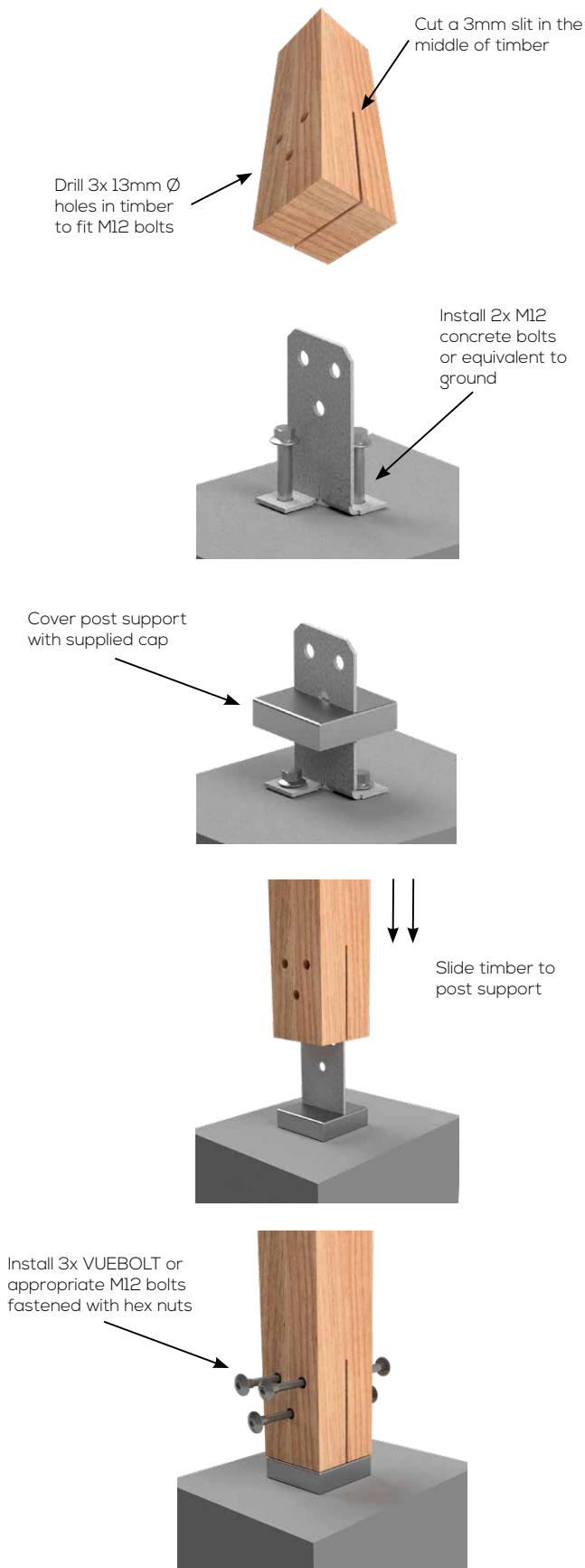




GALVANISED CONCEALED BOLT DOWN POST SUPPORTS

JUN23

INSTALLATION GUIDE AND BOLT FIXING SCHEDULE



DESIGN CAPACITY DATA

Table 1: Concealed Bolt Down Post Support Design Capacity

Load Direction to Grain	Design Capacity, kN
Parallel to Grain	32.8 kN

NOTES:

1. Design capacity in Table 1 applies to VUETRADE Post Supports where 2x M12 bolts are installed and tightly fastened with nuts.
2. Timber posts must have minimum dimensions of 90mm by 90mm section and shall be installed flat to the base of the post support.
3. Design capacities in the above table are for wind uplift (vertical force direction) only and are obtained under strict in-house test conditions defined by AS1649-2001 - *Timber - Methods of test for mechanical fasteners and connectors* & uplift capacity requirements outlined in AS1720.1-2010 - *Timber structures, Part 1: Design methods*.
4. VUETRADE Post Supports should only be used to resist wind uplift / dead load as specified in the TDS and should not be assumed to provide lateral stability. Sufficient bracing should be provided and approved by a structural engineer for lateral stability.

