



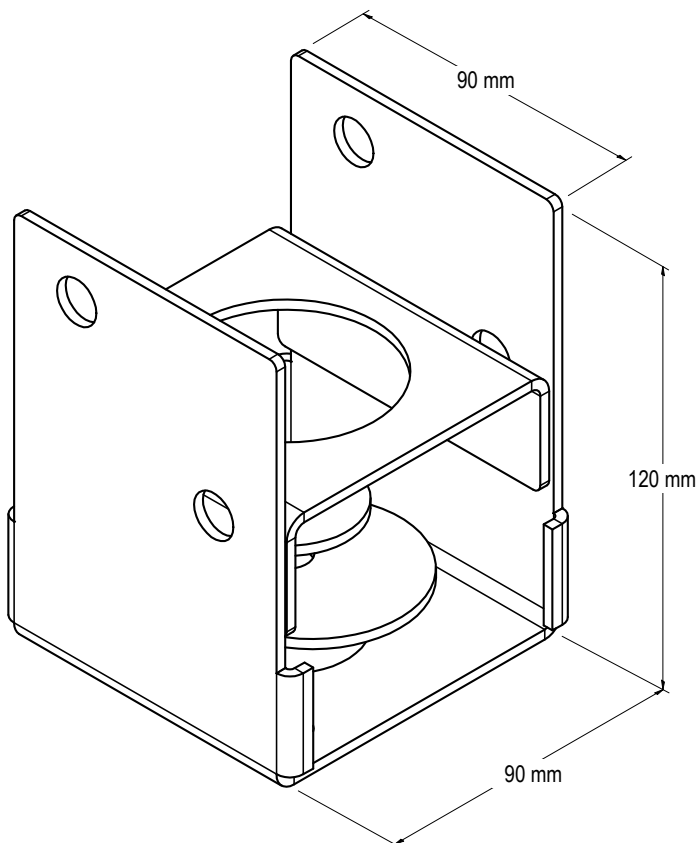
GALVANISED TRADIES BOLT DOWN POST SUPPORTS

JUN23

Compliant with the requirements of AS1720.

G GALVANISED

BOLTED TO CONCRETE



APPLICATION

VUETRADE Tradies Bolt Down Post support is an economical timber bolt down alternative to the standard bolt down post support, featuring a newly designed and engineered body. The adjustable cap allows the post support to switch between easy access mode and concealed mode.

SPECIFICATION

VUETRADE Tradies Bolt Down Post Supports are manufactured out of G300 Z275 in 1.6mm plate thickness.

FASTENERS

Saddle: 2x Zinc-Nickel Coated VUEBOLT or appropriate M12 bolts with hex nuts

Base: **Method 1:** 1x M12 concrete bolt or equivalent fastened with supplied washers, **OR:**

Method 2: 2x M12 concrete bolts or equivalent fastened to designated bolt holes, **OR:**

Method 3: Combination of above methods, using 3x M12 concrete bolts or equivalent fastened in designated bolt holes and along with supplied washers

SIZES

Product Code	Size (mm)	Suits timber widths
VTBPS90	90	Up to 90mm

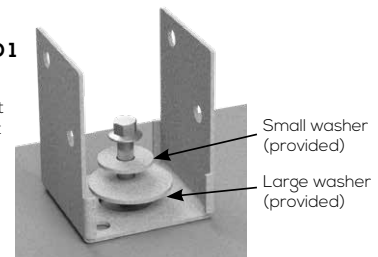
INSTALLATION GUIDE AND BOLT FASTENING SCHEDULE

Drill 2x 13mm Ø holes in timber to fit M12 bolts



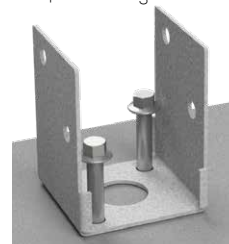
METHOD 1

Install 1x M12 concrete bolt or equivalent to ground



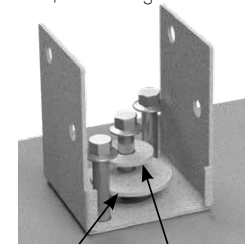
METHOD 2

Install 2x M12 concrete bolts or equivalent to ground



METHOD 3

Install 3x M12 concrete bolts or equivalent to ground



Large washer (provided) Small washer (provided)





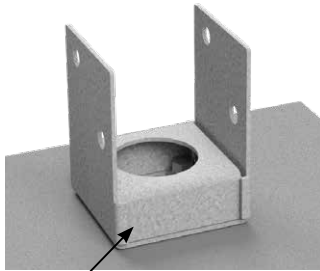
GALVANISED TRADIES BOLT DOWN POST SUPPORTS

JUN23

INSTALLATION GUIDE CONT'D

CONCEALED mode

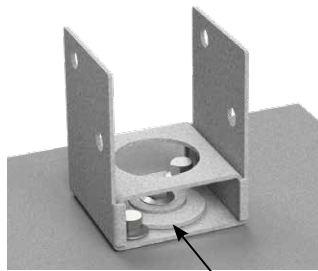
Suitable for those who wish to achieve a neat and concealed finish.



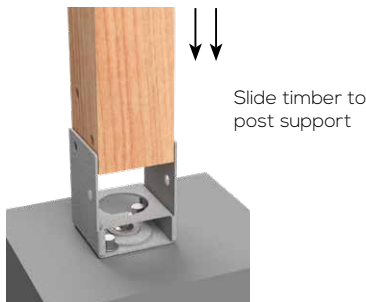
Place the post support cap to conceal the gap that shows bolts and washers within the post support.

OPEN mode

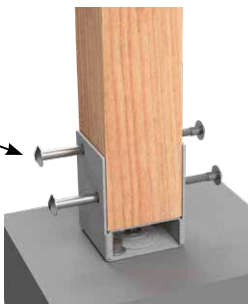
Suitable where re-tightening of bolts is needed after installation, or where larger tolerance is needed when fastening bolts.



Place the post support cap to open to reveal the gaps showing internal bolts and washers.



Install 2x VUEBOLT or appropriate M12 bolts fastened with hex nuts



INSTALLATION NOTES:

1. Method 1 is suitable for installation where a larger fixing tolerance is needed. Ensure that concrete bolt is fixed with the small washer sitting on top of the large washer.
2. Method 2 is suitable for installation where precise and strong post support fixing is needed.
3. Method 3 is suitable for installation where high fixing strength of post support is necessary. Ensure that concrete bolt is fixed with the small washer sitting on top of the large washer.
4. Refer to technical data for fixing method capacity.

DESIGN CAPACITY DATA

Table 1: Design capacities for Tradies Bolt Down Post Support

	Fixing Method	Design Capacity, kN
Method 1	1x concrete bolt fixed into washer hole using provided washers	21
Method 2	2x concrete bolts fixed into designated bolt holes (with washer)	26
Method 3	2x concrete bolts into fixed bolt holes + 1x concrete bolt into washer hole using provided washers	29

NOTES:

1. The design capacities in table above shall be used / read strictly to their respective fixing methods. Failure to do so will compromise the product's strength.
2. The design capacities in table above apply to both concealed and open modes.
3. Design capacity for post supports bolted to concrete assume that there is sufficient anchorage in the concrete to resist the pull-out force imposed by wind loading.
4. VUETRADE Post Supports should only be used to resist wind uplift / dead load as specified in the TDS and should not be assumed to provide lateral stability. Sufficient bracing should be provided and approved by a structural engineer for lateral stability.
5. The design capacities in the table above are for forces in the vertical direction and are obtained under comprehensive test conditions.
6. Timber post dimensions must have minimum dimensions of 90mm by 90mm section and shall be installed flat to the base of the post support.

