




POST SUPPORTS


Suiting timber posts 75 to 350mm
and designed for Australian conditions

OUR DIFFERENCE

VUETRADE produce Australia's largest range of galvanised and stainless steel post supports.

Using this guide, you can locate and decide which product is most suited for your timber post and project.

 **Timber Post Size Range:**
75 - 350mm square.

 **Materials:**
Hot Dipped Galvanised,
304 and 316 Stainless Steel.

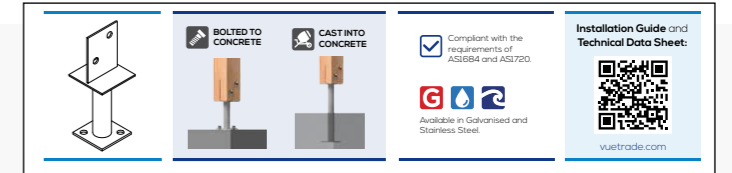
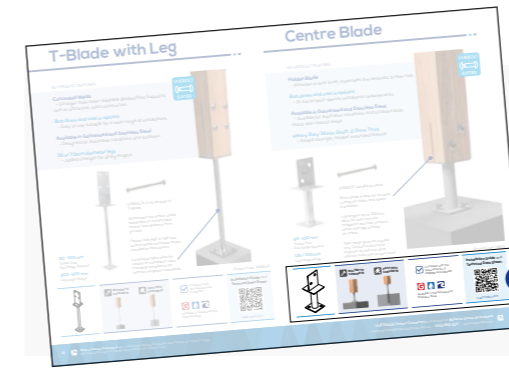
 **Anchoring Options:**
Bolted to and Cast Into Concrete.



CONTENTS

T-BLADE	8	TRADIE'S BOLT DOWN	15
T-BLADE WITH LEG	10	BOLT DOWN	16
CENTRE BLADE	11	HEAVY DUTY U-CUP	17
CONCEALED BOLT DOWN	12	FULL STIRRUP	18
DOUBLE T-BLADE	13	CYCLONIC	19
VUEBOLT	14	ADJUSTABLE	20
		HALF STIRRUP	21
		PIN STIRRUP	22

FULL RANGE



Every post support has an information bar detailing what methods are suitable to secure to ground, materials available for the support as well as a direct link to the products dedicated page at vuetrade.com



Image & Project Build: **Nautical Carpentry**



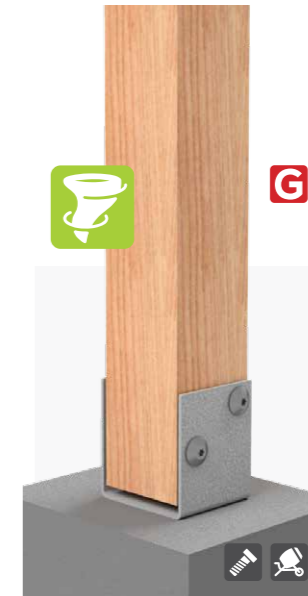
T-Blade
Clean finish for high quality timbers



Tradies Bolt Down
Adaptable and cost effective



Bolt Down
Raised base



Heavy Duty U-Cup
High wind anchor available in larger sizes



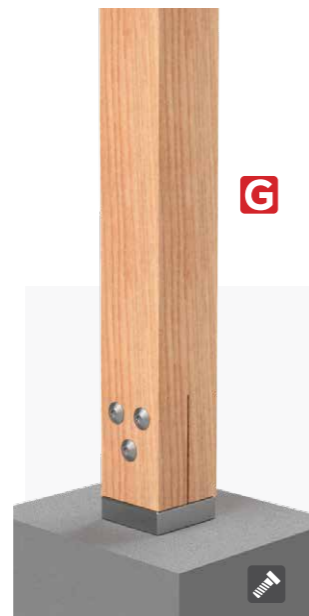
Full Stirrup
Cost effective legged support



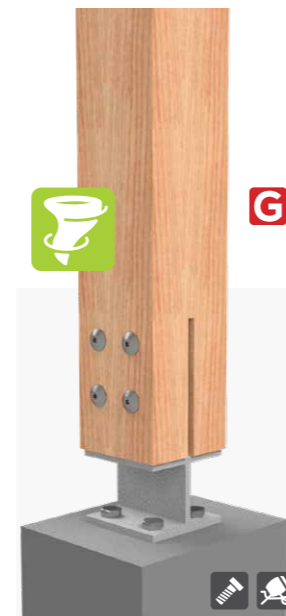
T-Blade with Leg
300 - 600mm leg lengths



Centre Blade
Cost effective bladed post support with leg



Concealed Bolt Down
Tidy finish for smaller timber post widths



Double T-Blade
Raised T-Blade with a blade rather than a leg



Cyclonic
6.0mm thick high-wind post support



Adjustable
Ability to install varying timber post sizes



Half Stirrup
One sided stirrup installation

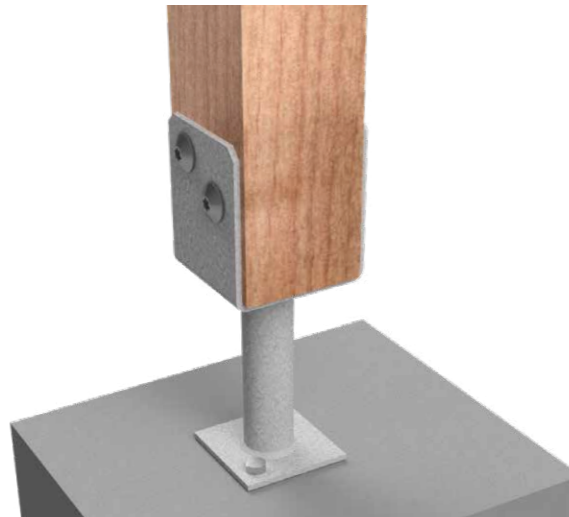


Pin Stirrup
Clean finish for low wind uplift scenarios

Galvanised
 Stainless Steel 304
 Stainless Steel 316
 Cyclonic
 Bolted to Concrete
 Cast Into Concrete

Galvanised
 Stainless Steel 304
 Stainless Steel 316
 Cyclonic
 Bolted to Concrete
 Cast Into Concrete

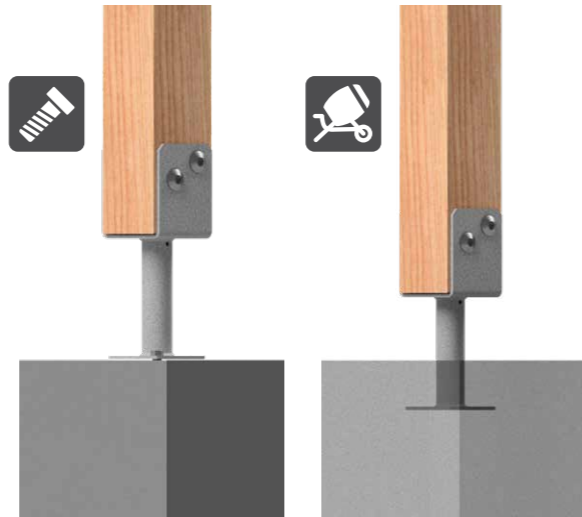
KEY FEATURES



Limits timber decay

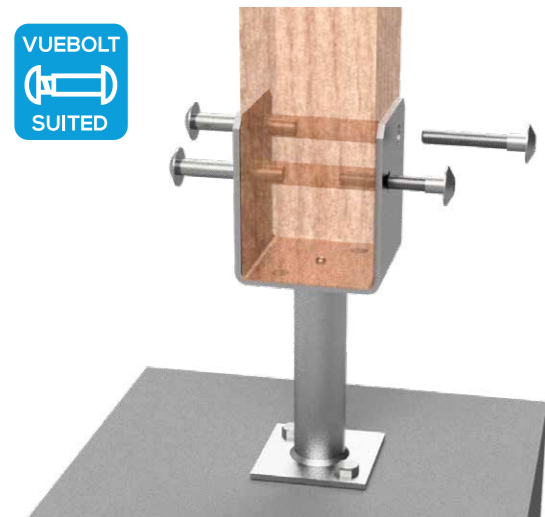
The number one reason to use a post support is to prevent timber decay and maximise the lifespan of the timber construction.

Without an appropriate post support water can pool around the timber end which then transfers moisture to within the timber.



Bolt Down or Cast In to concrete

Different projects require different solutions, many post supports are suited to both bolt down and cast in installations.

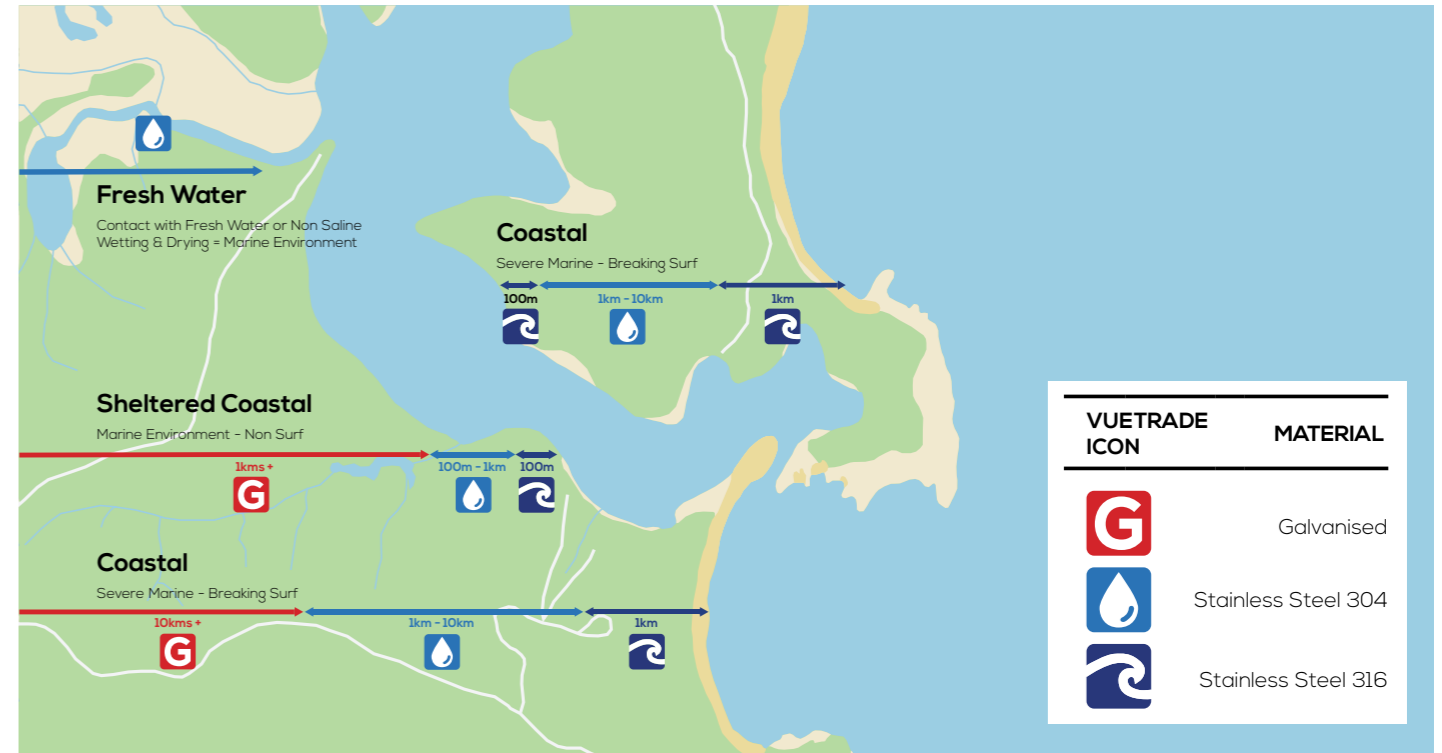


Uniquely clean, architectural finish when installed with VUETRADE's patent-pending VUEBOLTS



Cyclonic region post supports designed for high-wind areas.

SPECIFICATION AREA CHART



The right material for your location.



When using any timber connector externally it is vital to know how close your site is to a water body and why this should affect your choice of post support and/or material.



STANDARD / GALVANISED

- Internal / enclosed
- Exterior/exposed inland areas except if in contact with fresh water or non-saline wetting & drying



MARINE ENVIRONMENT

- Marine Environment - 100m up to 1km from a non-surf coast and from 1km up to 10km from a surf coast
- External applications in contact with freshwater or subject to non-saline wetting and drying
- Minimum steel grade required Stainless Steel 304



SEVERE MARINE

- Severe Marine - 100m from a non-surf coast and up to 1km from a surf coast
- Minimum Steel Grade Stainless Steel 316
- No 'Tea Staining', a superficial 'rust' look that occurs on lower grades of Stainless Steel including 304.



T-Blade

KEY PRODUCT FEATURES:

Neat finish

- Showing more timber and less metal.

Online Timber Cutting Resources

- Making installation even easier.

10.0 or 12.0mm Thick Blade and Base

- For a strong, reliable ground connection.

Concealed Welds

- Creates a reinforced connection stronger than similar products featuring a top weld.



Label provides clear guidance on correct cap and bolt size for full T-Blade system.



Concealing Caps

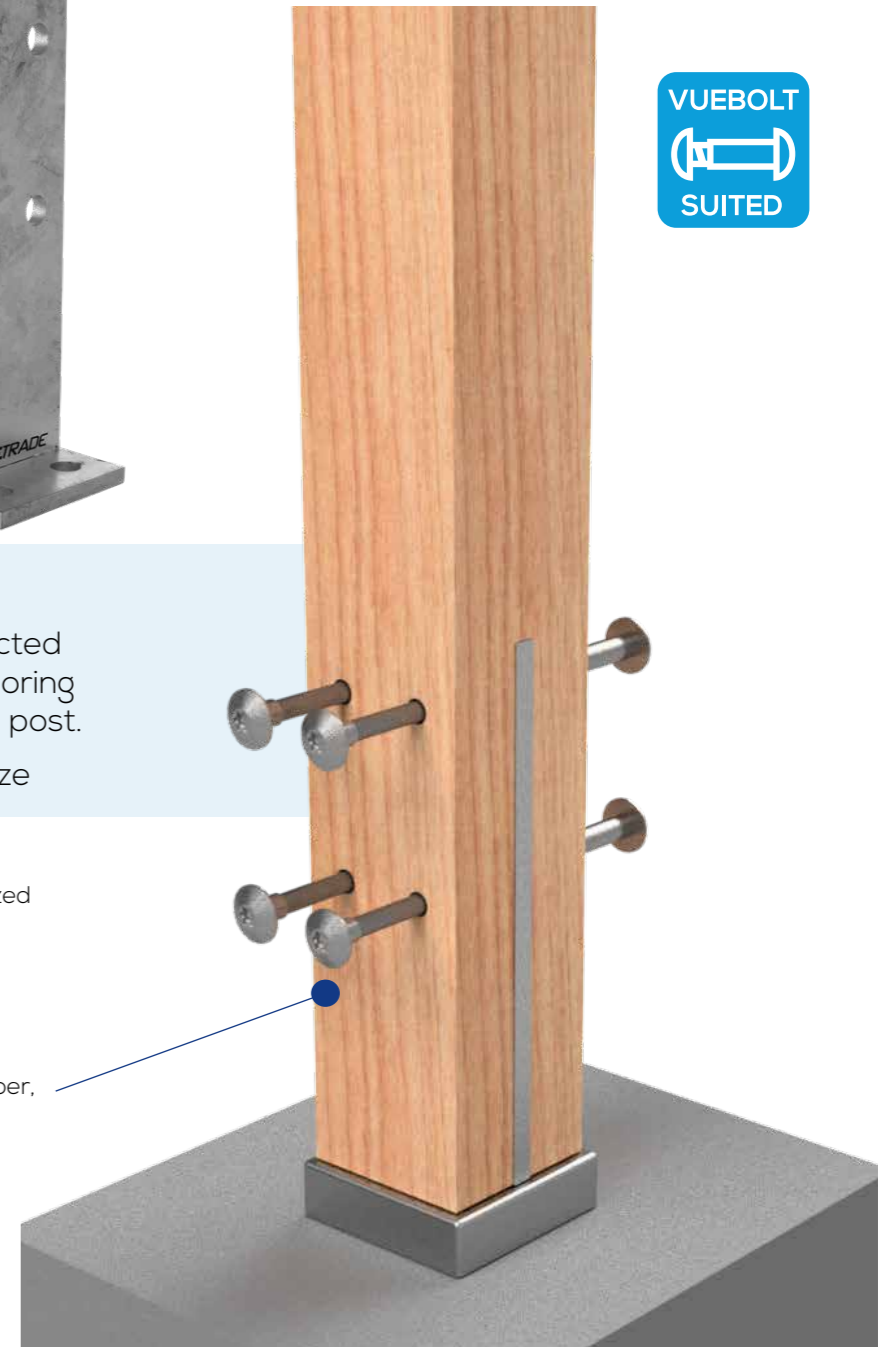
- Give a tidy and better protected finish, hiding the installation anchoring bolts and the bottom end of the post.
- Cap to match each T-Blade size

Generous size range to allow for regular-sized and oversized posts.

Appropriate steel material suited for your project wherever it is within Australia.

Due to the steel blade being within the timber, the timber retains visual appeal.

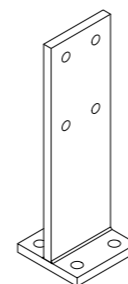
M12 / M16 / M20 bolt holes depending on your chosen T-Blade size.



Product Code: VBPTB

90 - 350 mm

Timber Post
Size Range (square)



BOLTED TO CONCRETE



Compliant with the requirements of AS1720.



Available in Galvanised and Stainless Steel.

Installation Guide and Technical Data Sheet:



vuetrade.com



T-Blade with Leg

KEY PRODUCT FEATURES:

Concealed Welds

- Stronger than other available Bladed Post Supports and an attractive, solid construction.

Bolt down and cast in options

- Easy to use suitable for a wide range of installations.

Available in Galvanised and Stainless Steel

- Designed for Australian conditions and locations.

35 or 73mm diameter legs

- Added strength for all leg lengths.



VUEBOLTS to fit all sizes of T-Blade.

Showcases the timber whilst being able to comfortably anchor and distance from ground.

Fasten with M12 or M16 size bolts in blade and base as per installation instructions.

Long leg lengths allow for variety of installation uses including compliance for termite mitigation standards.

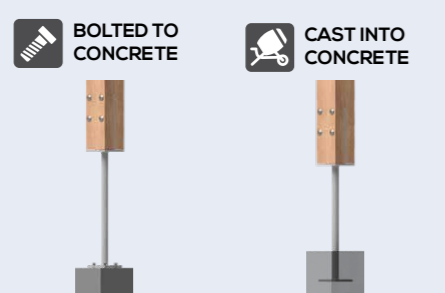
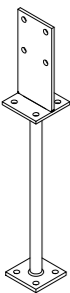
90 - 200 mm

Timber Post
Size Range (square)

300 - 600 mm

Leg Length Range

Product Code: VHDBLPS



Centre Blade

KEY PRODUCT FEATURES:

Hidden Blade

- Provides a neat finish, maximises the aesthetic timber look.

Bolt down and cast in options

- To suit project-specific installation requirements.

Available in Galvanised and Stainless Steel

- Suitable for Australian conditions and locations both inland and coastal areas.

Heavy Duty 32mm Shaft, 2.0mm Thick

- Added strength, reliable, extended lifetime.



VUEBOLT suitable product.

3mm blade makes for an easy cutting slit width, and faster installation.

Leg lengths up to 300mm allow for easy termite mitigation and help prevent water damage at base of timber.

*Size range given as a guide only. Consult a structural engineer to find out what solution suits your project best.

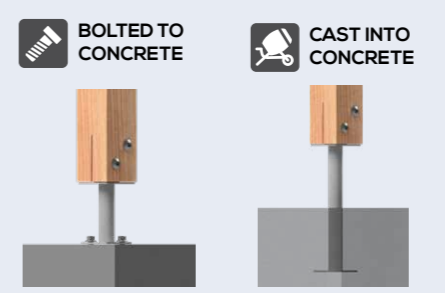
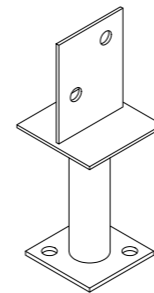
90 - 100 mm*

Timber Post
Size Range (square)

125 / 300 mm

Leg Length Range

Product Code: VBLPS



Concealed Bolt Down

KEY PRODUCT FEATURES:

Simple Post Preparation

- Reduce installation time on site.

Architectural Finish

- Concealed Blade and Stainless Steel Cap, suited for high-profile timber posts.

Available in Galvanised and Stainless Steel

- Suitable for Australian conditions and locations both inland and coastal.

3mm thick steel blade

- Added strength, long life and durability.



VUEBOLT M12 x 90-110 is the corresponding VUEBOLT size to secure this post support to the timber.

This kit contains both blade and cap for the most common sized timber posts.

3mm blade makes for an easy cutting slit width, and faster installation.

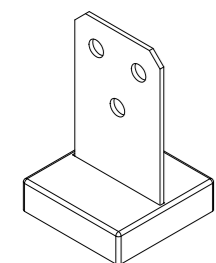
M12 bolt holes in both the saddle and base.

*Size range given as a guide only. Consult a structural engineer to find out what solution suits your project best.

90 - 100 mm*
Timber Post Size (square)



Product Code: VCBPS



BOLTED TO CONCRETE



Compliant with the requirements of AS1720.



Available in Galvanised and Stainless Steel.

Installation Guide and Technical Data Sheet:



vuetrade.com

Double T-Blade

KEY PRODUCT FEATURES:

10.0mm thick blade

- For large working loads in high wind conditions.

100 and 140mm leg lengths

- Height adaptability to suit your project.

Available in Galvanised

- For durability and long life.

Easy and quick to install

- Holes in the upper plate provide easy access to base for concrete bolts installation.



VUEBOLT suitable product.

Architectural finish for high profile timber posts.

M16 bolt holes in both blade and base.

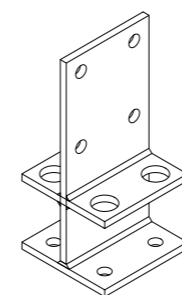
For areas that require termite mitigation procedures, the visual inspection is made easy due to the long leg.

140 - 230 mm
Timber Post Size Range (square)

100 / 140 mm
Leg Length Range



Product Code: VDTB



BOLTED TO CONCRETE



CAST INTO CONCRETE



Compliant with the requirements of AS1720.

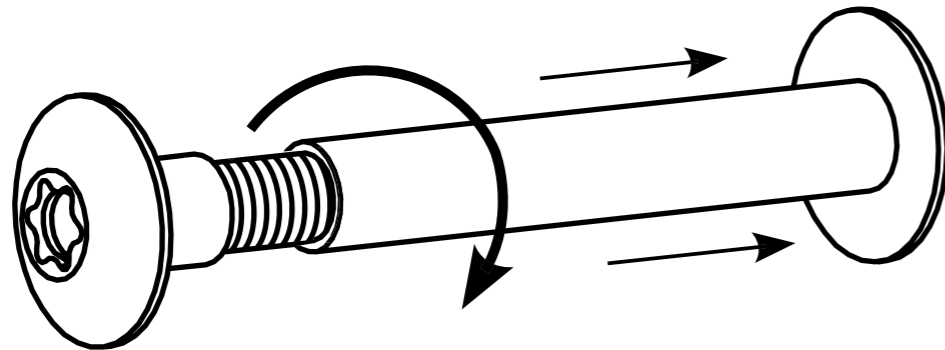
Available in Galvanised.

Installation Guide and Technical Data Sheet:



vuetrade.com





Unique, patent pending concealed threaded bolt

Suits any timber size between 90 and 360mm



G
Zinc-Nickel Coated



SS
Stainless Steel 316

	90mm	...	110mm	...	150mm	...	230mm	...	360mm
M10	M10 x 90 - 110mm								
M12	M12 x 90 - 110mm		M12 x 110 - 150mm						
M16	M16 x 110 - 150mm			M16 x 150 - 230mm					
M20	M20 x 230 - 360mm								

IDEAL FOR USE WITH:



Large Range of Post Supports



Timber to Timber

Installation Guide and Technical Data Sheet:



vuetrade.com

KEY PRODUCT FEATURES:

Unique open or closed finish

- Choose either open option for fine adjustment and adaptability, or the closed option for a clean finish.



Australian Made

- High quality, peace of mind whilst supporting Aussie jobs

Economical Price Point

- Suited for temporary and short-life projects.



Open Finish

Closed Finish

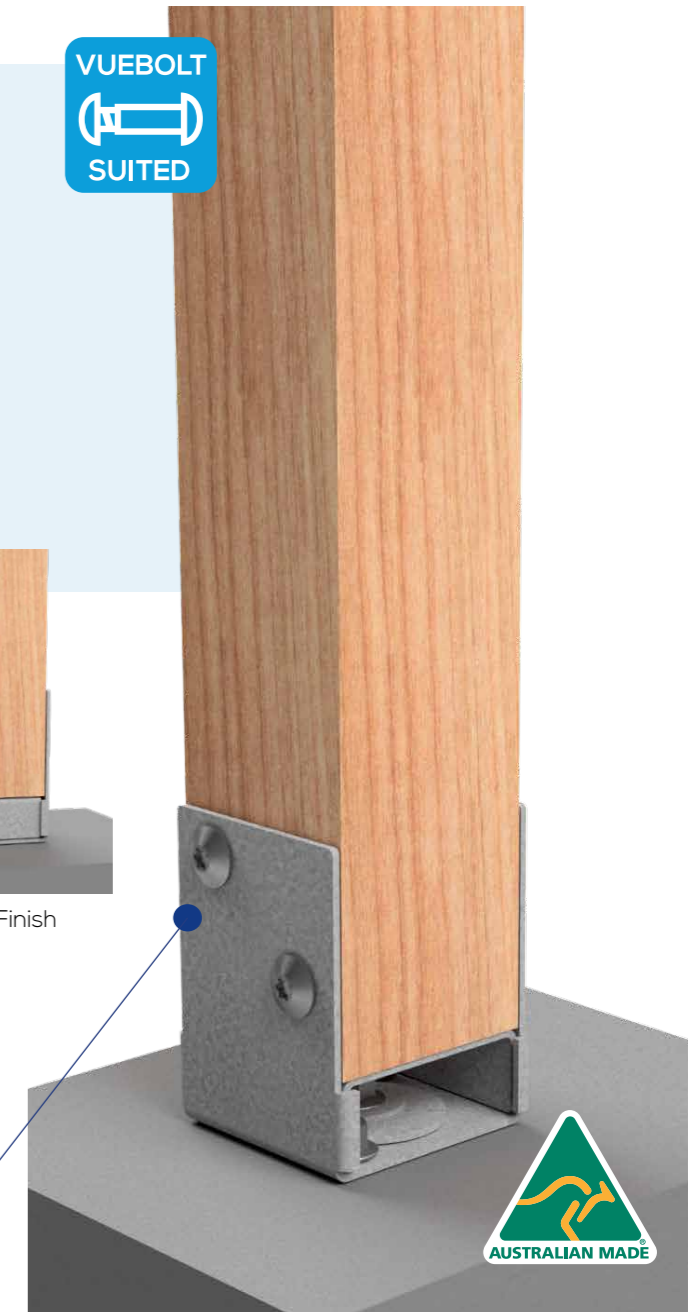


90 mm
Timber Post Size (square)

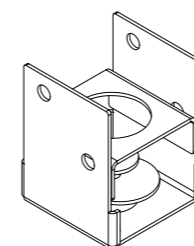
VUEBOLT M12 x 90-110 is the corresponding VUEBOLT size to secure this post support to the timber.

1.6mm thick steel creates a lightweight post support.

M12 bolt holes in saddle and base, with the option to secure to ground from 1 - 3 bolts.



Product Code: VTBPS



BOLTED TO CONCRETE

Compliant with the requirements of AS1720.

G Available in Galvanised.

Installation Guide and Technical Data Sheet:



vuetrade.com



Bolt Down

KEY PRODUCT FEATURES:

Concealed Anchoring of Timber Post

- The cap conceals anchoring bolts whilst saddle allows for easy installation of timber post.

Available in Galvanised and Stainless Steel

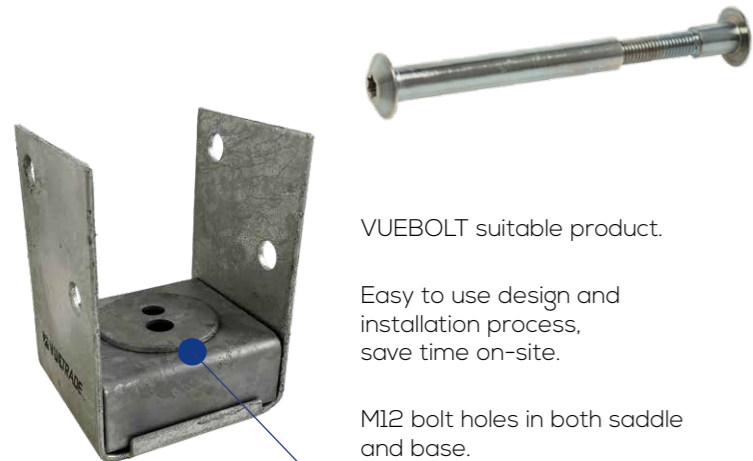
- Suitable for Australian conditions and locations.

3.0 - 4.0mm thick steel

- Larger post sizes benefit from thicker steel for increased working loads.



VUEBOLT
SUITED



VUEBOLT suitable product.

Easy to use design and installation process, save time on-site.

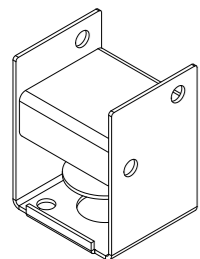
M12 bolt holes in both saddle and base.

Washer included in kit that allows for adjustment of post support positioning prior to timber installation.

90 - 200 mm

Timber Post Size (square)

Product Code: VBPS



BOLTED TO CONCRETE



Compliant with the requirements of AS1720.



Available in Galvanised and Stainless Steel.

Installation Guide and Technical Data Sheet:



vuetrade.com

Heavy Duty U-Cup

KEY PRODUCT FEATURES:

Cyclonic Rated

- Specially suited for high wind areas.

Wide Size Range

- Timber sizes from 75 to 150 mm.

Low to Ground

- Maximises working loads whilst being a time-efficient way to install a post.

4.0mm thick steel

- The additional strength allows for this post supports use in cyclonic regions of Australia.



VUEBOLT
SUITED



Product suitable for use with VUEBOLTS.

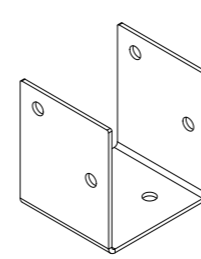
Galvanised finish for durability and long life.

M12 bolt holes in both saddle and base.

75 - 150 mm

Timber Post Size Range (square)

Product Code: VHDBPS



BOLTED TO CONCRETE



Compliant with the requirements of AS1720.

Available in Galvanised.

Installation Guide and Technical Data Sheet:



vuetrade.com



Full Stirrup

KEY PRODUCT FEATURES:

Wide range of leg lengths

- Same installation process for all leg lengths from 75 to 600mm to suit a variety of installation scenarios.

Bolt down and cast in installation options

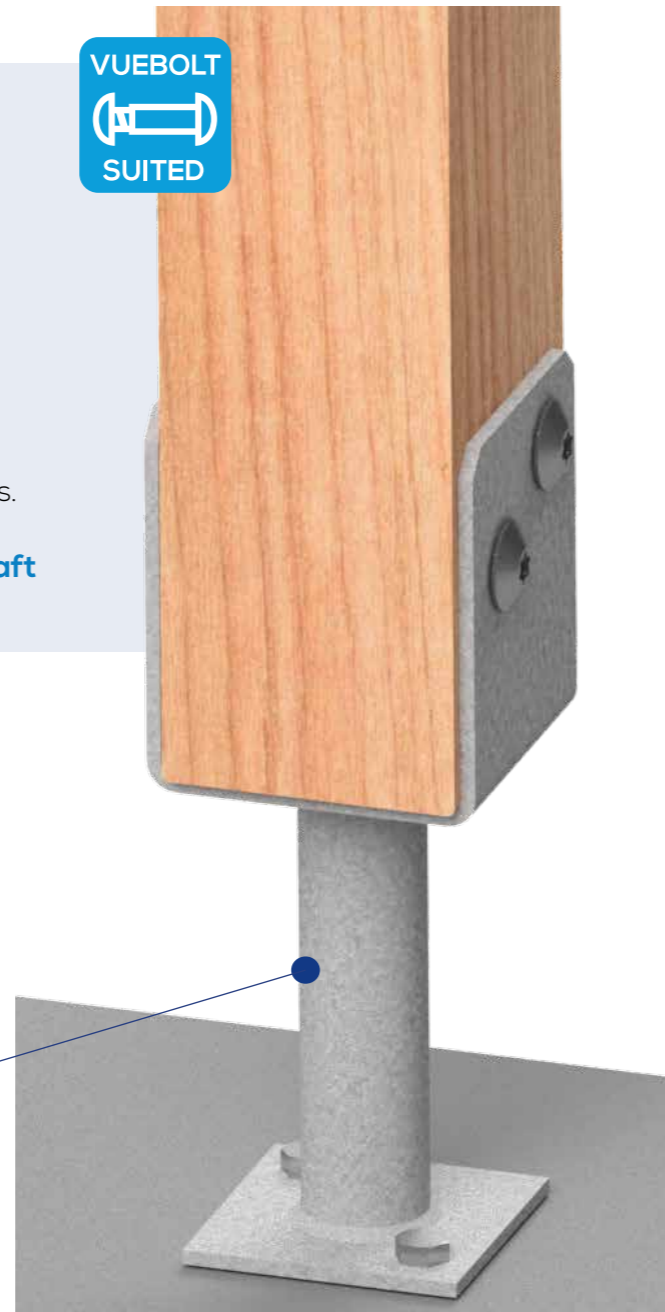
- To allow for a ground anchoring solution for most applications.

Available in Galvanised and Stainless Steel

- Designed for Australian conditions and locations.

Heavy Duty 2.0mm thick, 32mm Diameter Shaft

- Added strength for durability and long life.



VUEBOLTS are available to fit all sizes of Full Stirrup.

4.0mm thick steel on the saddle for a strong, long life product

Different leg length options of 75 to 600mm to suit your projects requirements and limitations.

M12 bolt holes in saddle and base.

Leg lengths allow for termite mitigation where necessary.

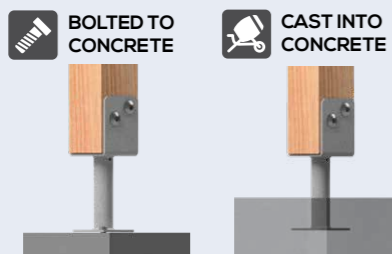
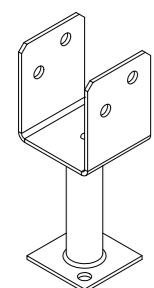
90 - 150 mm

Timber Post Size Range (square)

75 - 600 mm

Leg Length Range

Product Code: VPS



Compliant with the requirements of AS1684 and AS1720.



Available in Galvanised and Stainless Steel.

Installation Guide and Technical Data Sheet:



vuetrade.com

Cyclonic

KEY PRODUCT FEATURES:

Saddle designed for casting in to concrete

- Perfect for high-wind environments in cyclonic and coastal areas.

Designed to provide a gap between post and ground

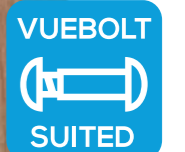
- Prevents decay and rotting of a timber post over its lifetime.

Wide Size Range 75 to 180mm

- Coupled with different leg lengths options to provide an ideal solution for your project specifications.

Cyclonic Rated

- Specially suited for high wind areas.



Product suitable for use with VUEBOLTS.

Stainless and galvanised material available to suit your projects location.

M12 bolt holes in saddle.

Sizes to allow for easy adherence to standards relating to appropriate termite management methods.

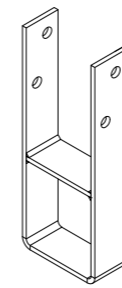
75 - 180 mm

Timber Post Size Range (square)

300 - 600 mm

Bottom Half Range

Product Code: VCYP5



CAST INTO CONCRETE



Compliant with the requirements of AS1684 and AS1720.



Available in Galvanised and Stainless Steel.

Installation Guide and Technical Data Sheet:



vuetrade.com



Adjustable

KEY PRODUCT FEATURES:

Adaptable Installation

- Allow for on-site installation of one type of post support where timber widths are unknown or variable.

Flexible Use Product

- Install one side at a time for sites with challenging accessibility.

75 or 160mm leg options

- Assists in mitigation of termites to allow for easy access to inspect end of the timber post.

Galvanised Finish

- For durability and long life.



4.0mm thick steel.

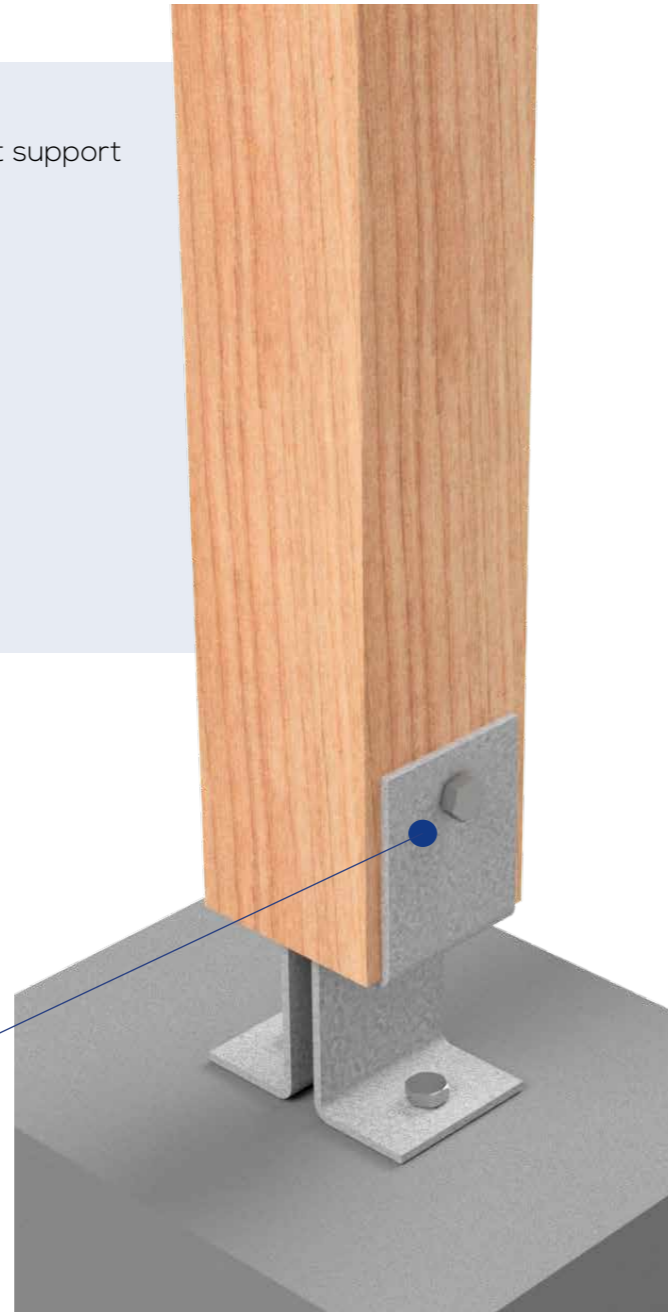
M10 bolt holes in saddle, can be used with one M10 bolt with a hex nut, or two M10 coach screws for oversized timber posts.

M10 size bolts to ground.

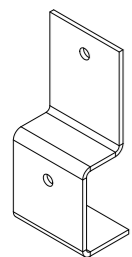
Note: This product is not suitable for VUEBOLT.

75 / 160 mm

Post Distance to Ground Options



Product Code: VAPS



BOLTED TO CONCRETE



Compliant with the requirements of AS1684 and AS1720.

G Available in Galvanised.

Installation Guide and Technical Data Sheet:



vuetrade.com

Half Stirrup

KEY PRODUCT FEATURES:

One sided stirrup

- No metal on three sides of timber for a clean finish.

Bolt down and cast in options

- Flexible to your project needs.

Available in Galvanised and Stainless Steel

- Suitable for Australian conditions and locations whether inland or close to the coast.

Heavy Duty 2.0mm thick, 32mm Diameter Shaft

- Added strength and durability for long life.



VUEBOLTs can be used for all recommended sizes of timber for the Half Stirrup.

4.0mm thick steel on saddle strong, long life product

Leg lengths to allow for adherence of termite mitigation standards.

M12 bolt holes in saddle and base.

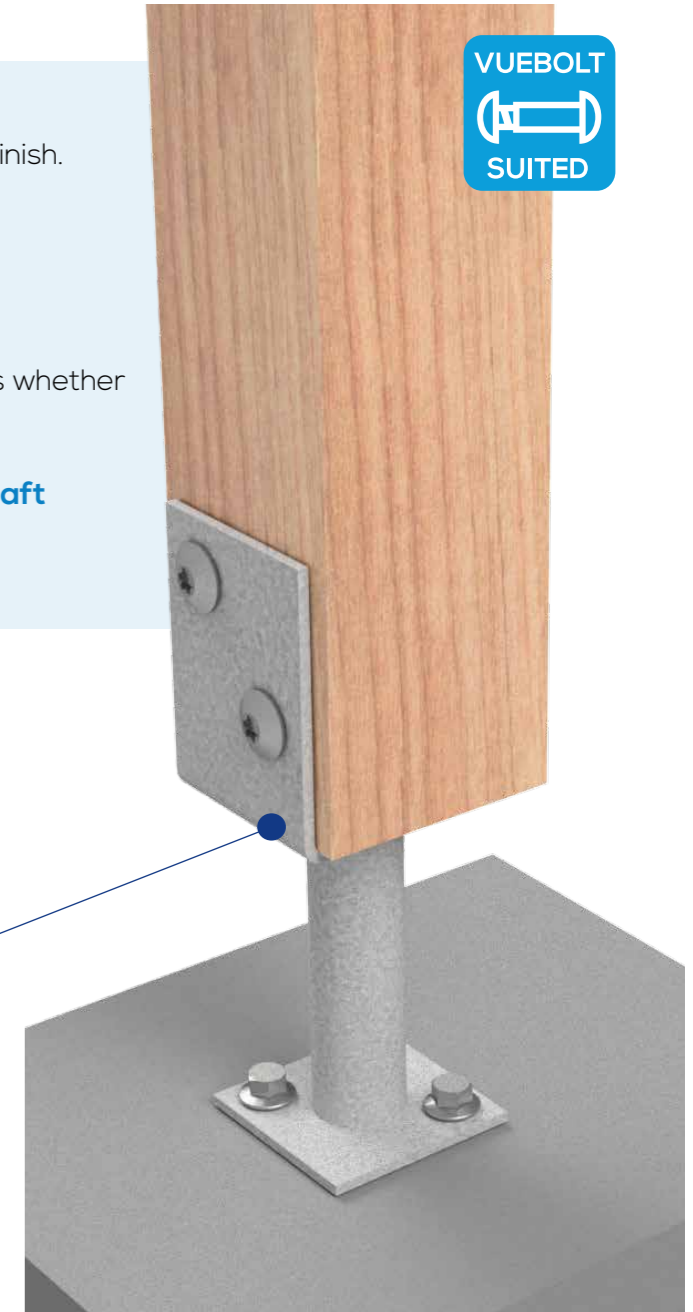
up to 150mm*

Timber Post Size Range (square)

75 - 300 mm

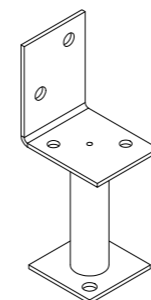
Leg Length Range

*Size range given as a guide only. Consult a structural engineer to find out what solution suits your project best.



**VUEBOLT
SUITED**

Product Code: VHSPS



BOLTED TO CONCRETE

CAST INTO CONCRETE



Compliant with the requirements of AS1684 and AS1720.

G Available in Galvanised and Stainless Steel.

Available in Galvanised and Stainless Steel.

Installation Guide and Technical Data Sheet:



vuetrade.com



Pin Stirrup

KEY PRODUCT FEATURES:

Connectors completely concealed

- All four timber sides retain a bolt-free finish due to the screw connection into the post base.

Bolt down and cast in options

- Easy to use and suited for lower load ratings.

Available in Galvanised and Stainless Steel

- Suitable for Australian conditions and locations, whether your site is close to the coast or inland.

Heavy Duty 32mm Shaft, 2.0mm Thick

- Added strength and durability for longevity.



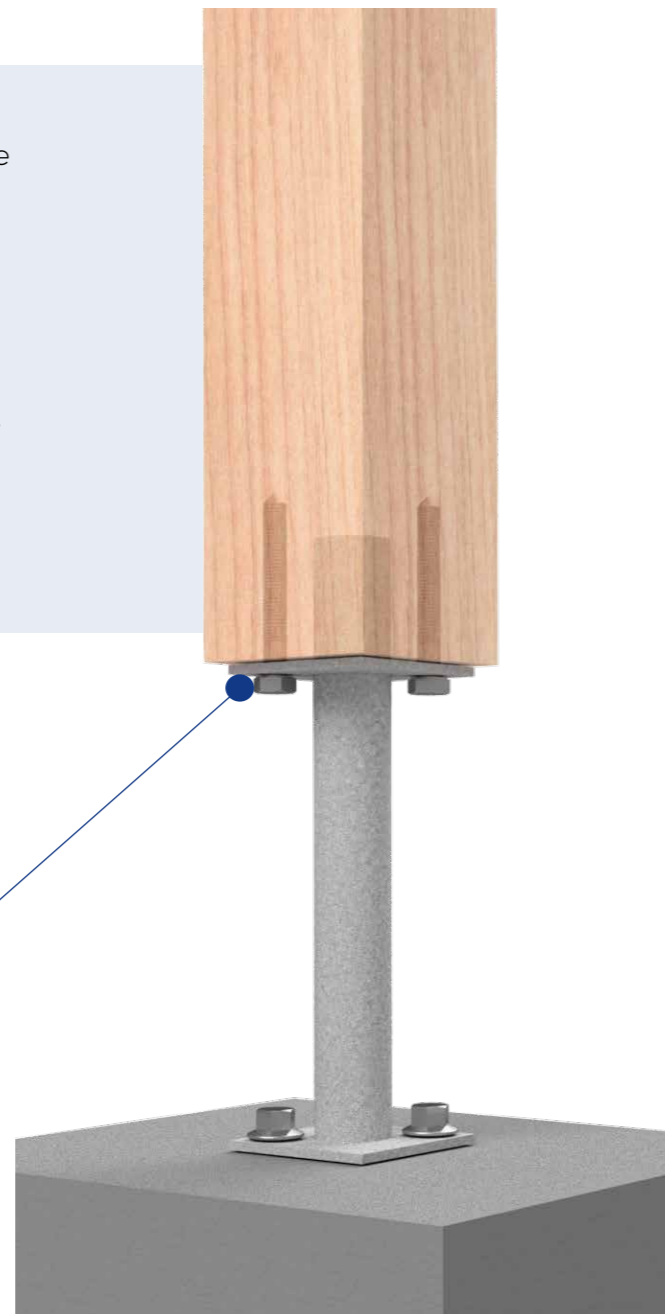
125 - 300 mm
Leg Length Range

M10 size coach screws are used to connect timber post to the post support.

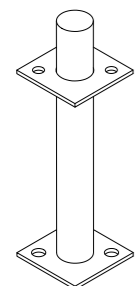
M12 size bolts to ground.

For areas that require termite mitigation procedures, the visual inspection is made easy due to the long leg.

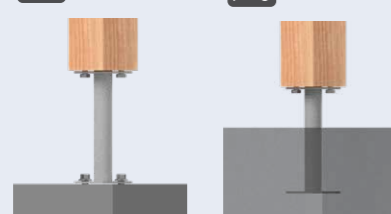
Note: This product is not suitable for VUEBOLT.



Product Code: VPPS



BOLTED TO CONCRETE **CAST INTO CONCRETE**



Compliant with the requirements of AS1684 and AS1720.

G Available in Galvanised.

Installation Guide and Technical Data Sheet:



vuetrade.com

WHICH POST SUPPORT IS RIGHT FOR YOU?

Project Site Aesthetics

Achieving a matching and visually appealing design is crucial for any project. Selecting the right post support to complement your timber and blend with the surrounding environment will ensure a stunning and enduring result that stands the test of time.

Environmental Factors

The proximity of your project to coastal conditions and the level of exposure to the elements play a significant role in determining the most suitable material for your post support. Whether you need the saline resilience of stainless steel if a galvanised steel support is sufficient VUETRADE can provide a suitable option.

Compliance and Risk Management

Our comprehensive range of post supports is designed to meet specific capacity ratings for wind uplift and size limitations, catering to a wide variety of applications. In certain regions, termite management measures may be necessary to protect the timber base. Our products meet Australian Standards when installed in accordance with our Technical guidelines.

Efficiency and Expertise

We don't just supply you a post support. Our comprehensive resources to guide you through the installation of each post support ensure a smooth and efficient project build.

With our guidance, you can confidently plan and install our products with ease. Should you require further clarification or assistance, our team of experts is just a phone call away.

Budget Considerations

Balancing quality and cost is essential for a successful project. We understand the importance of finding the perfect post support solution that meets your needs while staying within your budget.

Our product line offers a wide range of options, with varying features and price points, to accommodate projects of all sizes and scopes. From premium T-Blade products to more price-sensitive bolt down options.

We hope that this guide we hope you find the ideal post support that combines outstanding performance, durability, and value for money.



Australian Made

Our range of Australian Made products is consistently growing and something we are proud of.

To see if a locally-made option is available for a particular design get in touch to see if we can organise this for you.

Inspiration

Our social media channels are full of different projects and timber connector products. We are excited to share your successes (and challenges) as well as information about best and safest installation practices.



BUYERS GUIDE

BLADED POST SUPPORTS

Icons	Product	Code	Timber Post Size (SQUARE)									
			90	100	115	140	150	180*	230	250**	350 mm	
	T-Blade	VBPTB	VBPTB 90100		VBPTB 115140	VBPTB 150180		VBPTB 180200 ***		VBPTB 250350		
	T-Blade with Leg	VHDBLPS	VHDBLPS 60080		VHDBLPS 600110	VHDBLPS 300140 SOLID & 600140 SOLID		VHDBLPS 600180				
	Centre Blade	VBLPS	VBLPS 125 & VBLPS 300 ****									
	Concealed Bolt Down	VCBPS	VCBPS 90									
	Suitable VUEBOLT		VUEBOLT M12 x 90 - 110mm	VUEBOLT M16 x 110 - 150mm	VUEBOLT M16 x 150 - 230mm				VUEBOLT M12 x 230 - 350mm			

* Exactly 180mm square timber posts can be secured by the following five products: VBPTB 150180 & 180200, and VHDBLPS 300140 SOLID, 600140 SOLID & 600180.

** Exactly 250mm square timber posts can be secured by the following three products: VBPTB 180200 & 250350, and VHDBLPS 600180.

*** The largest size timber that can be secured on a VBPTB 180200 post with a VUEBOLT is 230mm square. This support can secure up to 250mm size timber using other appropriate M16 bolts fastened with hex nuts.

**** Check hole size for either M10 or M12 bolt fittings.

Where 'xx' is listed in the product code this denotes a leg / height variable that does not affect matching of timber size or VUEBOLT.

SADDLED POST SUPPORTS

Icons	Product	Code	Timber Post Size (SQUARE)											
			75	90	100	115	125	135	140	150	180	200 mm		
	Tradies Bolt Down	VTBPS		VTBPS 90										
	Bolt Down	VBPS		VBPS 90	VBPS 100	VBPS 115	VBPS 125	VBPS 135(SS)	VBPS 140(SS)	VBPS 150(SS)			VBPS 200(SS)	
	Heavy Duty U-Cup Bolt Down	VHDBPS	VHDBPS 75	VHDBPS 90	VHDBPS 100	VHDBPS 115	VHDBPS 125			VHDBPS 140	VHDBPS 150			
	Full Stirrup	VPS		VPS xx90	VPS xx100	VPS xx115	VPS xx125	VPS xx135	VPS xx140	VPS xx150				
	Cyclonic Post Support	VCYPS	VCYPS 60075	VCYPS xx90	VCYPS xx100	VCYPS xx115	VCYPS xx125			VCYPS xx140	VCYPS xx150	VCYPS xx180		
	Suitable VUEBOLT			VUEBOLT M12 x 90 - 110mm		VUEBOLT M12 x 110 - 150mm								

OTHER POST SUPPORTS

Icons	Product	Code	Timber Post Size (SQUARE)					
			90	100	115	140	150	180
	Adjustable	VAPS	Due to being in two parts, the Adjustable Post Support has no set size range. No suitable VUEBOLT.					
	Half Stirrup	VHSPS		VHSPS VUEBOLT M12 x 90 - 110mm	VHSPS VUEBOLT M12 x 110 - 150mm			
	Pin Stirrup	VPPS	VPPS No suitable VUEBOLT.					

If your post support or timber size isn't listed, please contact us for appropriate solutions and fastening information.



Image & Project Build: All Aspects Carpentry

PROTECTION AND SAFETY

By using a post support, you raise the base of your timber posts above the surface level you prevent water pooling around the timber from the ground or moisture seeping up which can cause premature decay of your timber post.

In addition, the physical distance between timber and ground allows termite inspection work to be conducted easier.

TECHNICAL DATA & INSTALLATION

For every VUETRADE product a downloadable PDF is available on our website for technical data which includes recommended installation method, design capacities and known restrictions.

Within this guide, there is a QR code on the footer of each product that provides a direct link to the products page on our website.

90 to 360 mm

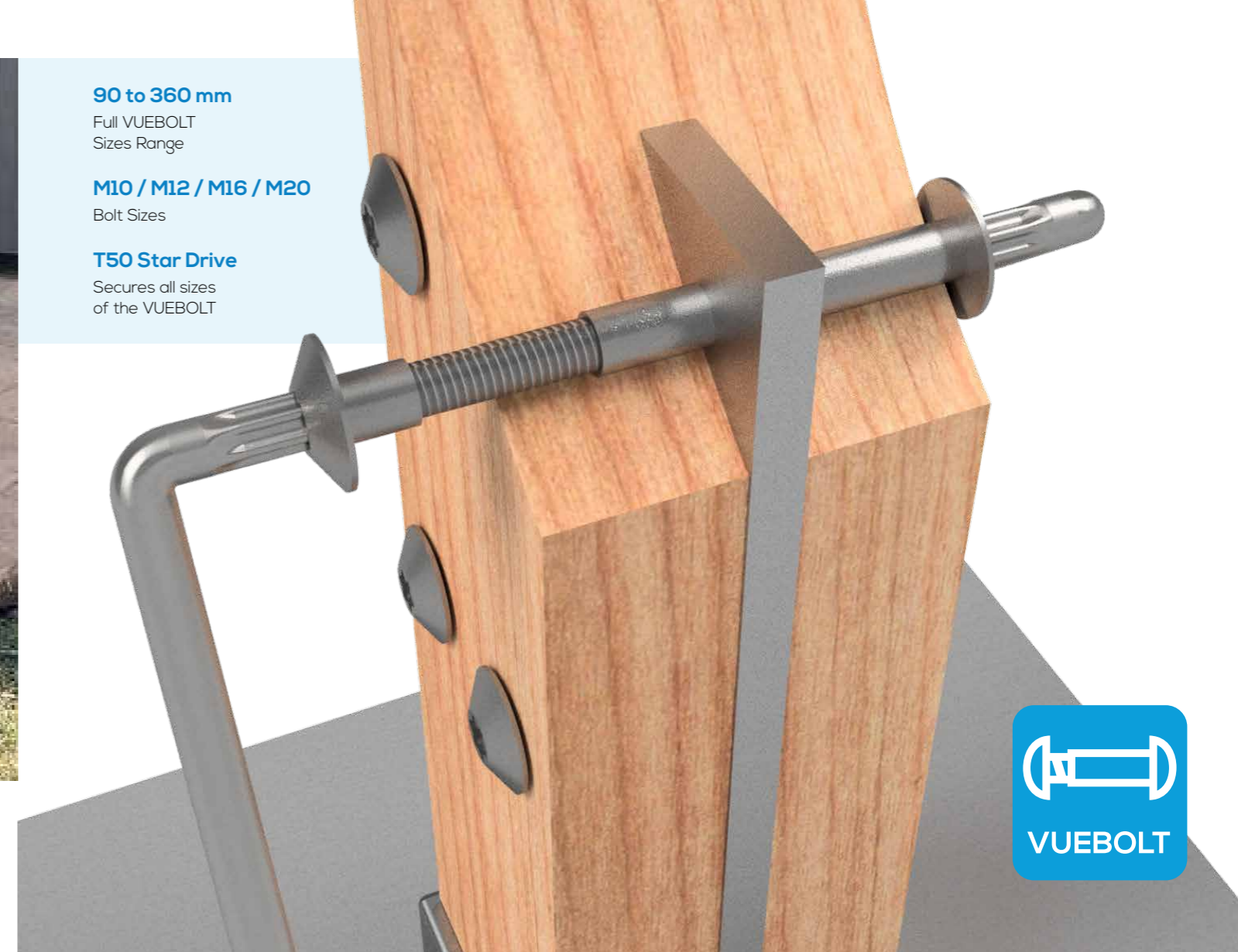
Full VUEBOLT
Sizes Range

M10 / M12 / M16 / M20

Bolt Sizes

T50 Star Drive

Secures all sizes
of the VUEBOLT



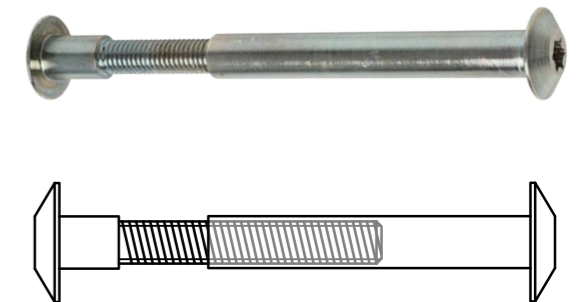
VUEBOLT

Also known as the **post support bolt**, the VUEBOLT truly shines in its ease of use and clean finish when being used to secure a timber post.

To install first insert the female half to the drilled segment and turn the male half to secure using a T50 star drive wrench. Due to its design, the connecting threads from both sides remain balanced at all times of the installation process.

Once secured, there is no need to saw off any protruding pieces, no need to secure nuts, and no need to cover to minimise risk as the thread is fully concealed within the timber.

To learn more, scan the QR code or search for VUEBOLT online.



 Engineered. Tested.
AS Compliant.



Available in Galvanised and
Stainless Steel 316.

**Installation Guide and
Technical Data Sheet:**



vuetrade.com





GALVANISED



STAINLESS STEEL 304



STAINLESS STEEL 316



CYCLONIC RANGE



BOLT ONTO CONCRETE



CAST INTO CONCRETE

POST SUPPORTS

T-BLADE

T-BLADE WITH LEG

CENTRE BLADE

CONCEALED BOLT DOWN

DOUBLE T-BLADE

TRADIE'S BOLT DOWN

BOLT DOWN

HEAVY DUTY U-CUP

FULL STIRRUP

CYCLONIC

ADJUSTABLE

HALF STIRRUP

PIN STIRRUP



Other category documents:



1300 850 520

www.vuetrade.com

customercare@bellevuegroup.com.au